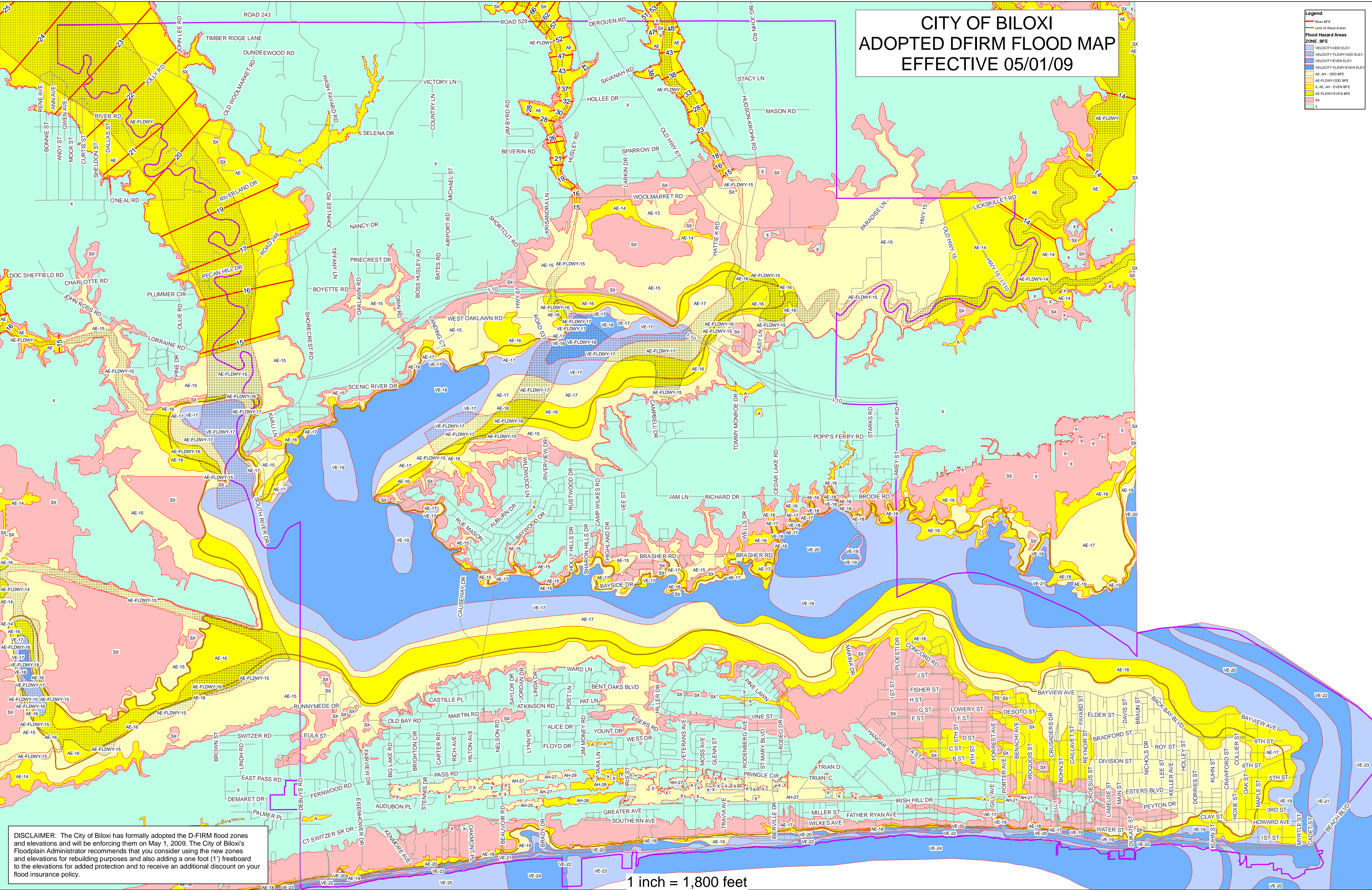


# CITY OF BILOXI ADOPTED DFIRM FLOOD MAP EFFECTIVE 05/01/09

Flood Hazard Areas	
—	River BFE
—	Limit of Wave Action
ZONE: BFE	
[Pattern]	VELOCITY-ODD ELEV
[Pattern]	VELOCITY-FLDWY-ODD ELEV
[Pattern]	VELOCITY-EVEN ELEV
[Pattern]	VELOCITY-FLDWY-EVEN ELEV
[Pattern]	AE-AH-ODD BFE
[Pattern]	AE-FLDWY-ODD BFE
[Pattern]	AE-AH-EVEN BFE
[Pattern]	AE-FLDWY-EVEN BFE
[Pattern]	SX
[Pattern]	X



**DISCLAIMER:** The City of Biloxi has formally adopted the D-FIRM flood zones and elevations and will be enforcing them on May 1, 2009. The City of Biloxi's Floodplain Administrator recommends that you consider using the new zones and elevations for rebuilding purposes and also adding a one foot (1') freeboard to the elevations for added protection and to receive an additional discount on your flood insurance policy.

1 inch = 1,800 feet